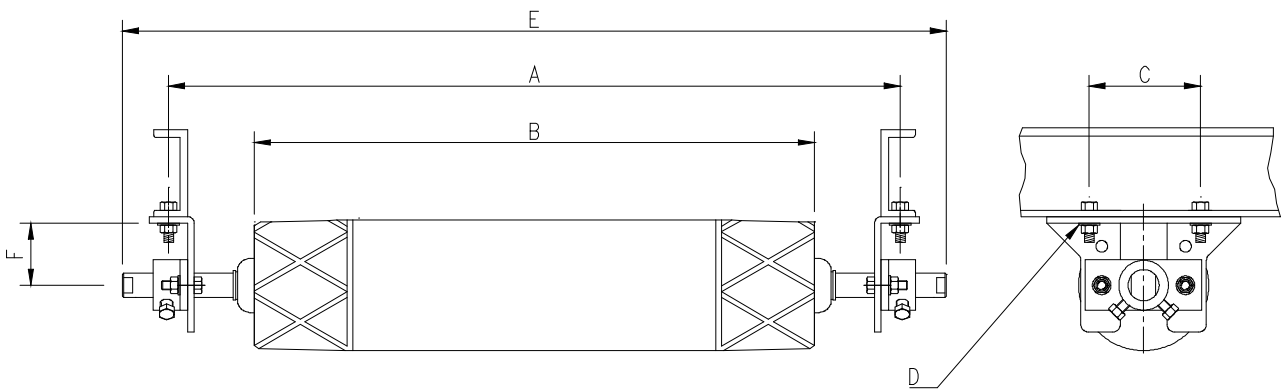


TECHNICAL DATA

Tru-Trac Flat Return Tracker Heavy Duty

Outside Rubberised drum = 170 Dia*
Shaft = 40 Dia



Compatible with both 90 & 45 Drops

Code	Belt width	A Adjustable	B	C Min - Max	D (Slot)	E	F	Weight (Kg)
TTFR135HDA	1350	1600	1420	85 - 195	14 X 70	1780	40-115	83
TTFR140HDA	1400	1700	1470	85 - 195	14 X 70	1830	40-115	84
TTFR150HDA	1500	1752	1570	85 - 195	14 X 70	1930	40-115	86

All dimensions in mm

Non standard trackers can be made to customer specifications

*170 dia, represents the minimum diameter, the actual dia can vary between 170 to 174

** Note: Steel Bearing Housings, Heavy Duty Shaft, Full face is rubberised

TRU-TRAC ROLLERS (PTY) LTD

Tel: +27 (12) 661-9531 Fax: +27 (12) 661-9489 Web Page: <http://www.tru-trac.com>
Email: info@tru-trac.com PO Box 8707 Centurion 0046