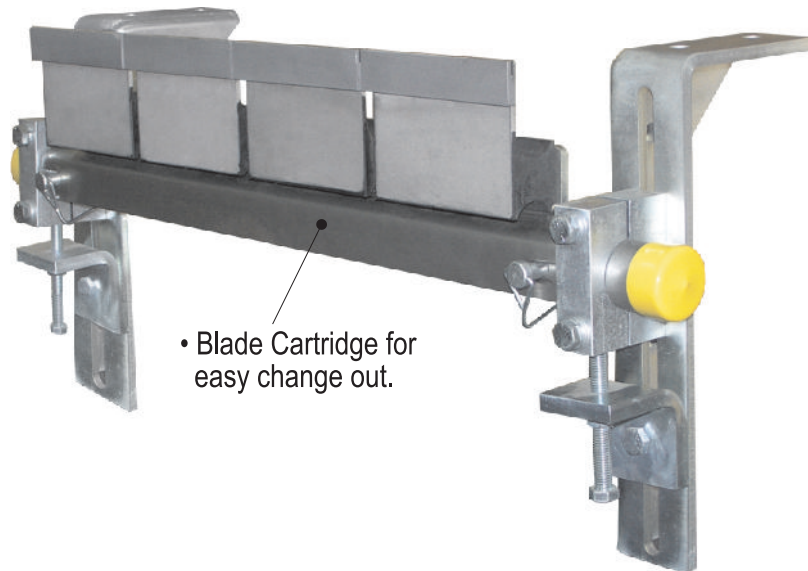


RAZOR-BACK

Superior Secondary Belt Cleaning System

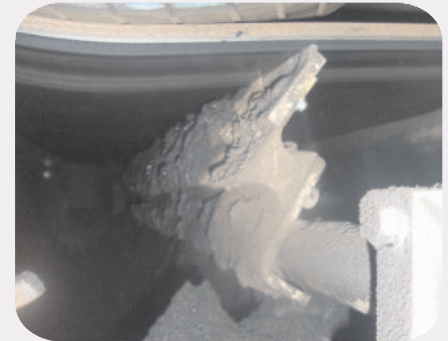


The **Tru-Trac Razor-Back** secondary belt cleaner features tough self-adjusting replaceable tungsten carbide blades (non-carbide also available) for extremely effective belt cleaning.



• Blade Cartridge for easy change out.

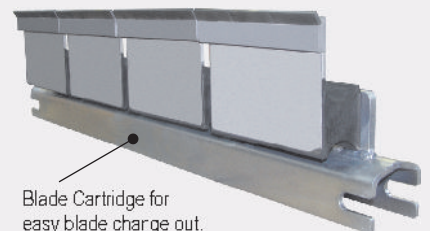
- **Longwearing Abrasion Resistant** - tungsten carbide blades provides and maintains a great cleaning edge against the belt.
- **Impact Absorbing Tension Cushions** - tension each individual blade to the belt for a controlled and effective belt cleaning across the entire width of the belt.
- **Compact Design** - allows for an installation that requires less than 230mm of clearance to be installed and maintained.
- **Mechanical Splices? No Problem** - The Razor-Back can be installed on belts with mechanical splices, due to the laid-back wiping blade angle and impact-absorbing tensioning cushions, allowing the mechanical splices to pass without damaging the belt cleaner or the splice.



Razor-Back with V-tips installed on this coal handling conveyor at a major coal-fired power plant.

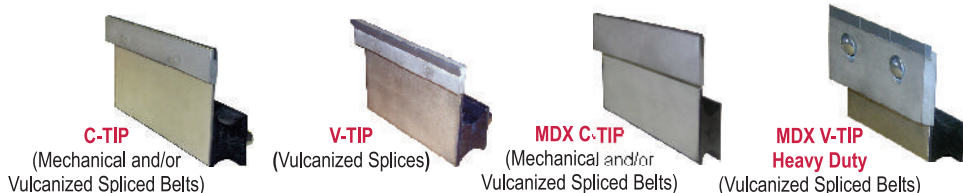


Blade Cartridge allows for easy change out of scraper blades from either side of the conveyor.



Blade Cartridge for easy blade change out.

Available in 4 Tungsten Carbide Blade Types:



Also available with Spray Bar

Complete Razor-Back Scraper with Bolt-Up Tensioner

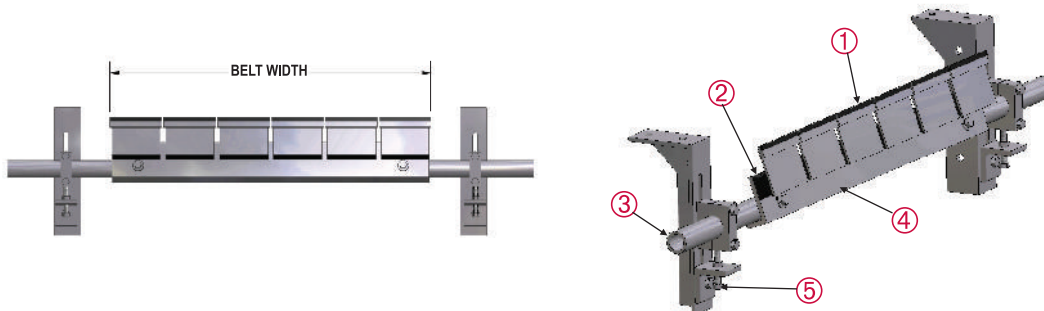
Part Number	Belt Width	Weight	Description
TTSCRB45*	450mm	35kg	Tru-Trac Razorback Scraper 450mm
TTSCRB60*	600mm	43kg	Tru-Trac Razorback Scraper 600mm
TTSCRB75*	750mm	47kg	Tru-Trac Razorback Scraper 750mm
TTSCRB90*	900mm	51kg	Tru-Trac Razorback Scraper 900mm
TTSCRB105*	1050mm	55kg	Tru-Trac Razorback Scraper 1050mm
TTSCRB120*	1200mm	59kg	Tru-Trac Razorback Scraper 1200mm
TTSCRB135*	1350mm	68kg	Tru-Trac Razorback Scraper 1350mm
TTSCRB150*	1500mm	71kg	Tru-Trac Razorback Scraper 1500mm
TTSCRB165*	1650mm	71kg	Tru-Trac Razorback Scraper 1650mm
TTSCRB180*	1800mm	80kg	Tru-Trac Razorback Scraper 1800mm
TTSCRB210*	2100mm	88kg	Tru-Trac Razorback Scraper 2100mm

* = "C" (For C-Tip) "V" (For V-Tip) "MDXC" (For MDX C-Tip) "MDXV" (For MDX V-Tip)

Spare Parts

Code	Item #	Description
TTSCRBCTIP	1	Tru-Trac Razorback C-TIP Tungsten Blade
TTSCRBVTIP	1	Tru-Trac Razorback V-TIP Tungsten Blade
TTSCRBMDXCTIP	1	Tru-Trac Razorback MDX C-TIP Tungsten Blade
TTSCRBMDXVTIP	1	Tru-Trac Razorback MDX V-TIP Tungsten Blade
TTSCRBCUS	2	Tru-Trac Razorback Rubber Cushion
TTSCRBMt**	3	Tru-Trac Razorback Galv Mounting Tube
TTSCRBCAR**	4	Tru-Trac Razorback Blade Cartridge
TTSCBUBR	5	Tru-Trac Bolt-Up Tensioner & Bracket

** = Belt Width



Tru-Trac Rollers (Pty) Ltd.
Conveyor Belt Technology